



Using GCC Printers with Mac OS X

This document is provided to assist with the installation, selection and use of GCC's PostScript laser printers with Apple's Mac OS X operating system.

The installation portion of this document requires GCC's "OS X PPD Installer" software. This software can be downloaded from [GCC's web site](#).

Contents:

Introduction	2
Part One - Installing PPD Files and Fonts	3
Part Two - Selecting your GCC Printer	5
Part Three - Printing from Mac OS X	8
Part Four - Additional OS X Information	11
Information Resources	12

Introduction

The GCC OS X PPD Installer software will install PostScript Printer Description (PPD) files for GCC's PostScript printers onto your Mac OS X system. The installer will also install screen fonts onto the system that will allow the resident fonts within your printer to be used.

Please note that this installer is compatible with Mac OS X only and will not operate with previous versions of the Mac OS. Software downloads for use with older Mac OS versions are available from [GCC's web site](#).

Listing of Supported Printers

The list of printers supported by this installer includes:

- Elite 2I SE
- Elite 2I DN
- Elite 2I N
- Elite XL 20/1200
- Elite XL 20/800
- Elite XL 20/600
- Elite 12/1200N
- Elite 12/600N
- Elite 12/600 USB
- Elite 12/600
- Elite 1212
- Elite XL 1208S
- Elite XL 1208
- Elite XL 808
- Elite XL 608
- Elite XL 616
- Elite XL 408
- Elite 600

The following PPDs are also installed, but have not been tested and are not supported by GCC under OS X:

- SelectPress 1200
- SelectPress 600
- BLP Eclipse 8
- BLP Eclipse 4
- BLP Elite
- BLP IIS
- BLP II

PPDs are installed into the /Library/Printers/PPDs folder of OS X. Files relating to printer models not in use on your system can be safely deleted after the installation.

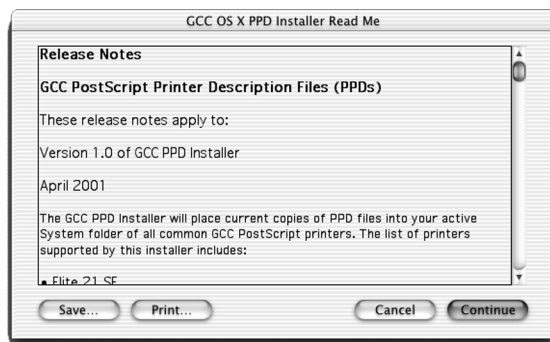
Steps for performing the PPD installation are found beginning on the next page.

Part One - Installing PPD Files and Fonts

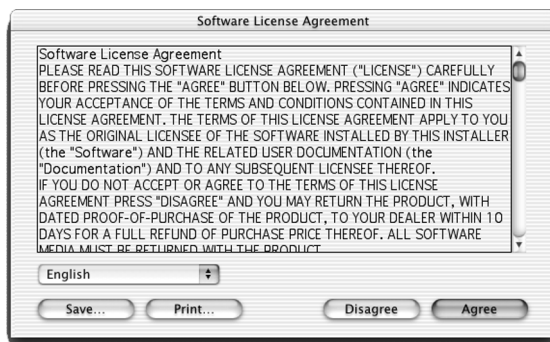


1. Make sure you have a copy of GCC's OS X PPD Installer software. This software is available for download from [GCC's web site](#).

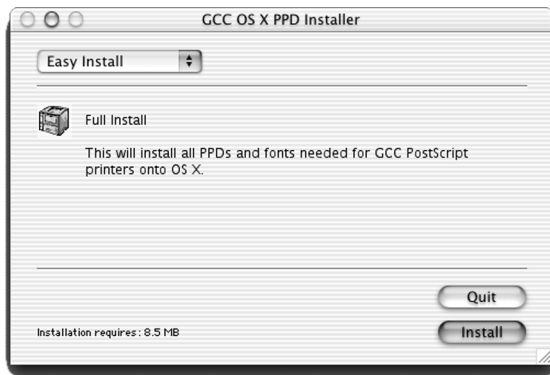
Double-click the "GCC OS X PPD Installer" icon. An introductory window will appear. Click "Continue."



2. A ReadMe window will open, displaying the Release Notes for the installer. Read these notes, then click "Continue" to proceed.



3. The Software License Agreement will be displayed. Read the contents of the agreement, then click "Agree" to proceed.



4. The PPD Installer window will appear. The default setting is “Easy Install,” which installs all the PPD files and screen fonts included in the installer. Click “Install” to proceed, or click on “Easy Install” and pull down to “Custom Install” to customize installation options.

Once all options are selected, click “Install” to proceed.



5. A status window will appear, showing the progress of the installation.



6. When installation is complete, a window will appear informing you that the installation was successful. Click “Quit.”

The PPD files and/or fonts for your GCC printer are now installed.

Proceed to Part Two on the next page to select your printer within the OS X environment.

Part Two - Selecting your GCC Printer

Mac OS X does not use the traditional Chooser or Desktop Printer Utility in order to select and manage printers. Instead, OS X ships with a utility called Print Center which serves these functions. This section of the document will outline the printer selection process using Print Center.

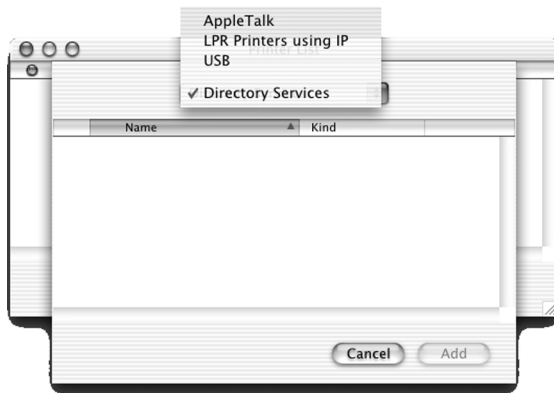


1. Install the GCC OS X software onto the Macintosh following the steps in Part One of this document ("Installing PPD Files and Fonts.")

2. After the installation is complete, open the Print Center utility. Print Center is found in the Utilities folder, within the Applications folder of your OS X system.



3. When Print Center opens, a window titled Printer List will appear. This gives a listing of all currently installed printers on the computer. Click the "Add Printer..." button to add a new printer.

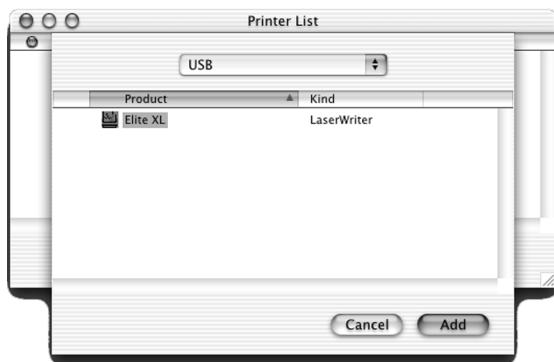


4. Clicking Add Printer will open a new window, featuring a pull-down menu at the top. Click on this menu to bring up a list of printer connection methods (AppleTalk, LPR Printers using IP, or USB.) Select the connection method being used for your GCC printer.

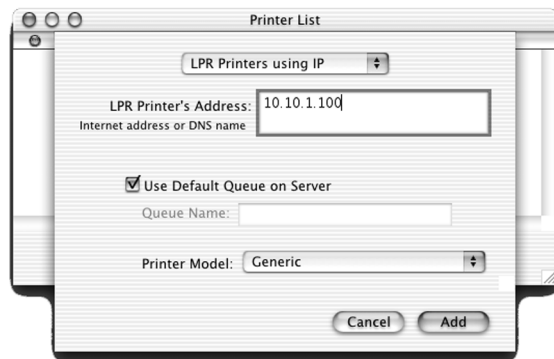
USB Connections: Proceed to Step 5

LPR Connections: Skip to Step 6

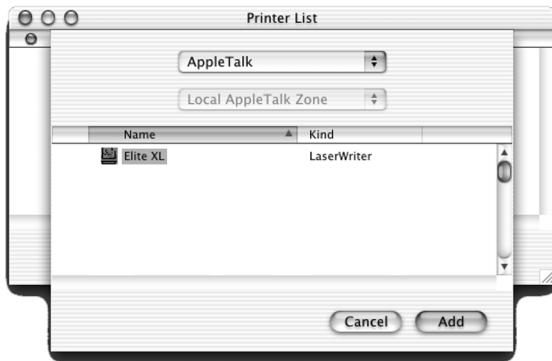
AppleTalk Connections: Skip to Step 7



5. If USB is selected, make sure the printer is plugged into the computer via USB and turned on. A list of available USB printers will appear. Click on the name of your printer and click "Add." Proceed to Step 8.



6. If LPR Printers using IP is selected, make sure the printer is turned on, connected to the network and has been assigned an IP address. Fill in the IP address under the "LPR Printer's Address" field. Select your specific GCC printer model from the Printer Model pull-down menu. Click "Add." Proceed to Step 8.



7. If AppleTalk is selected, make sure the printer is turned on and connected to the network. A list of available AppleTalk printers will appear. Click on the name of your printer from the list. Click “Add.”

Note: AppleTalk is disabled by default within OS X. Make sure that “Make AppleTalk Active” is selected in your Network Settings (under System Preferences) before attempting to access AppleTalk devices on the network.



8. Once the printer has been added, you will be returned to the Printer List window, where the printer will now appear as an option.

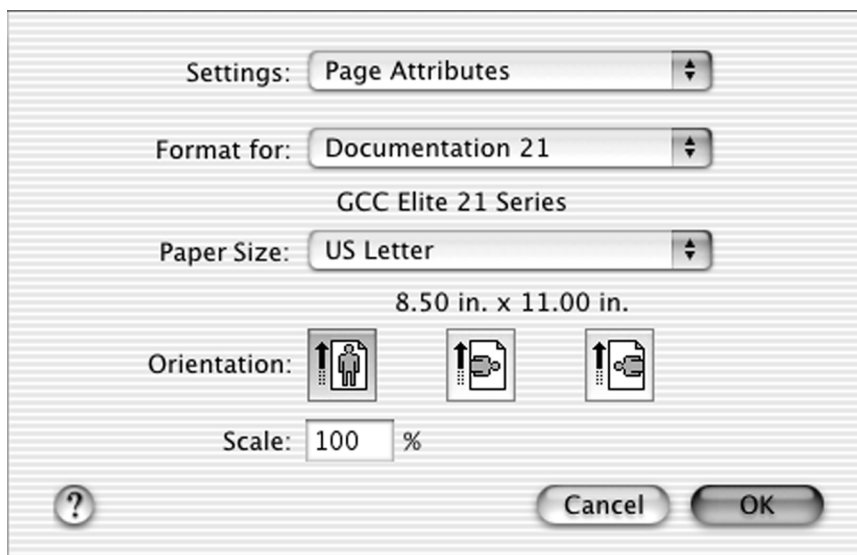
Part Three - Printing from Mac OS X

This section is intended as a brief overview of printing from Mac OS X. For more detailed information regarding printing and Mac OS X, consult the Mac OS X documentation or the documentation for the application you are using.

As with previous Mac OS versions, most printing options within a Macintosh application are found within the Page Setup or Print dialog boxes, under the application's File menu. Options found within each of these categories are discussed in this section.

The Page Setup dialog box

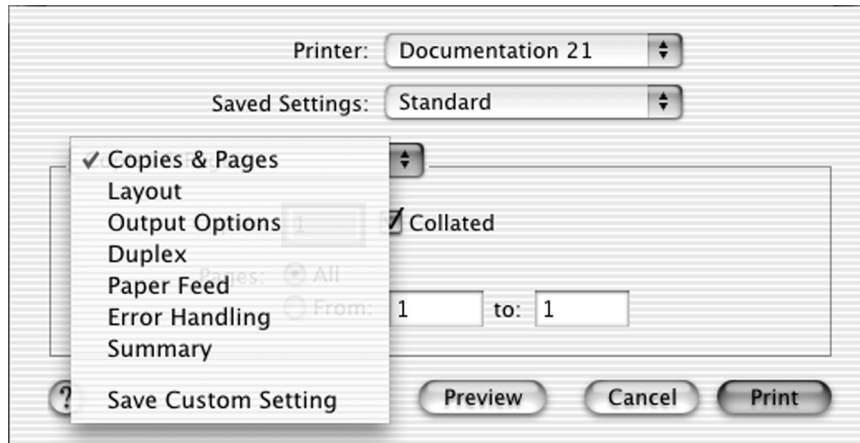
Selecting Page Setup within your application will bring up a dialog box similar to this:



The “Page Attributes” settings allow the user to select which printer to format the job for (from the list of installed printers in the Print Center utility), the Paper Size being used, the Orientation of the job and the Scale for the output. Clicking on “Page Attributes” and pulling down to “Summary” will display a summary listing of the current settings for all these options. Make any necessary changes to these options in this window and click OK to return to the document.

The Print dialog box

Selecting Print from within the application will bring up a dialog box similar to this:



The “Printer” pull-down menu allows the user to specify which printer to send the job to (from the list of installed printers in the Print Center utility.)

The “Saved Settings” pull-down menu allows the user to select a set of previously defined printing settings.

Other printing options are set through a series of windows, selected by clicking on the pull-down menu shown above. The functions of these windows are as follows:

Copies and Pages - This is the default window for the Print dialog box. It allows the user to select the number of copies to be printed, select whether or not copies are to be collated and define a page range to be printed if desired.

Layout - Allows for the number of pages on a sheet, the layout direction for multiple pages on a sheet and a border type to be set.

Output Options - Allows the job to be saved as a PDF file rather than sent to a printer.

Duplex - Allows duplex printing to be enabled and the duplex binding mode to be selected. This option only appears on printers which have duplex printing available as an option

Paper Feed - Allows the paper feed source on the printer for the job to be selected.

Error Handling - Determines how PostScript Errors and Tray Switching are handled.

Summary - Displays a summary listing of all the current settings for the other options in the Print dialog.

Save Custom Setting - Allows a set of printer options to be saved and added to the “Saved Settings” pull-down menu for future use.

Each of these windows also has three buttons at the bottom. The “Preview” window allows the print job to be previewed before sending it to the printer. The “Cancel” button cancels the printing process and returns to the document. The “Print” button sends the job to the printer.

Once all options in the Page Setup and Print dialogs are set as desired, click the “Print” button to print the job.

Note: Some applications may bring up custom Page Setup and/or Print dialog boxes or list additional functions not shown here. Consult your application’s user documentation for more specific information.

Part Four - Additional Mac OS X Information

Configuring Printer Options

Unlike previous versions of the Mac OS, OS X does not allow for or require manual configuration of printer options. When the printer is installed and selected in Print Center, the OS takes configuration information from the PPD file and polls the printer to determine which options are present. These options (such as additional trays, duplexing capabilities) will then automatically be available for selection within the Print dialog box.

This is the case for both AppleTalk and USB connected printers. LPR printers using IP, however, due to the uni-directional nature of LPR, are unable to poll the printer for information and therefore default to assume that all available options are installed. In these cases, printing options that are not available on a particular printer may show up in the Print dialog box. Keep in mind the printer's actual physical configuration when selecting paper trays, etc. via LPR.

Printing from the Classic Environment

The GCC OS X PPD Installer will only operate with OS X and does not install any PPD files or fonts into the Classic (OS 9.1) environment within OS X. In order to print from Classic applications, you must perform a separate software installation from within Classic. Launch Classic, then use the original software disks that came with your printer to install the GCC printing software within the Classic environment. The latest driver software for all GCC PostScript printers is also available for download from [GCC's web site](#).

Once the printer software is installed within Classic, use the Chooser or Desktop Printer Utility to select the printer. Once installed and selected, you can print from Classic applications in exactly the same way that you would print from a stand-alone Mac OS 9.1 system.

Consult your previous printer documentation for more detailed information regarding the installation and printer selection process using Mac OS versions prior to OS X.

Information Resources

This document is intended to provide an overview of the steps necessary to install, select and use your GCC printer with Mac OS X. For more detailed information, consult Apple's OS X documentation or the user documentation from the application(s) you are printing from.

Additional assistance is also available through GCC Technical Support. You can contact GCC for technical assistance in several ways:

- Technical Support phones: (781) 276-8620.
(North America only)
- Fax: (781) 275-1115.
- GCC's World Wide Web site: <http://www.gccprinters.com/support>
- Internet e-mail: support@gccprinters.com

Customers outside North America can locate local support resources via our web site at <http://www.gccprinters.com/worldwide>, or via e-mail at isupport@gccprinters.com

Keep in mind that assistance is limited for those printer models listed as not supported on [Page 2](#) of this document.

TRADEMARKS

GCC Technologies is a registered trademark of GCC Technologies Inc. GCC Printers, the GCC Printers logo, Elite, SelectPress and BLP are trademarks of GCC Technologies, Inc. Apple, AppleTalk, LaserWriter, Mac, Macintosh, and the Apple logo are registered trademarks of Apple Computer, Inc. PostScript is a registered trademark of Adobe Systems Incorporated. Ethernet is a registered trademark of Xerox Corp.

CREDITS

© Copyright GCC Technologies Inc., 2001. All rights reserved.
Written by David Nicholson. Edited by Brian Harriss.

Guide printed in USA. Part number 030-16482 Rev A